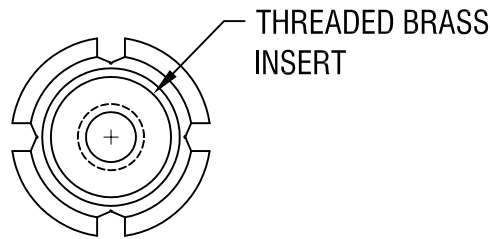
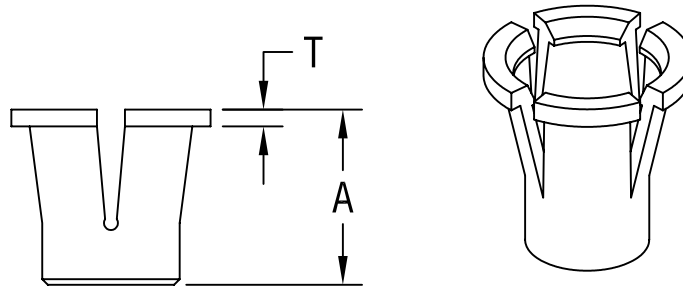


THIS DOCUMENT IS THE PROPERTY OF
KEYSTONE ELECTRONICS CORP. AND
SHALL NOT BE REPRODUCED, DISTRIBUTED
OR USED AS A BASIS FOR MANUFACTURE
WITHOUT PRIOR WRITTEN PERMISSION
FROM KEYSTONE ELECTRONICS CORP.



PART NO.	THREAD (INSERT)	$\pm .015$ [$\pm .38$] 'A' DIM.	$\pm .010$ [$\pm .25$] 'T' DIM.	(MAX. DIM.) MTG HOLE
4341	4-40	.312 [7.92]	.030 [0.76]	.250 [6.35]
4342	6-32	.375 [9.53]	.030 [0.76]	.312 [7.92]
4343	8-32	.500 [12.70]	.030 [0.76]	.406 [10.31]

KEYSTONE ELECTRONICS CORP.

ASTORIA, N.Y. 11105-2017

PART NAME

BLIND CAPTIVE NUT-PRESS FIT

MATERIAL

MOLDED NYLON, BRASS INSERT

FINISH

-

DRN BY

BOONE

DATE

12.14.06

APP'D

LN

SCALE

NONE

TOLERANCES

INCH [MM]

DECIMAL $\pm .005$ [± 0.15]

ANGULAR $\pm 1^\circ$
UNLESS OTHERWISE SPECIFIED

CODE

DWG NO.

C/M

4341-4343

DATE

DESCRIPTION

REV.